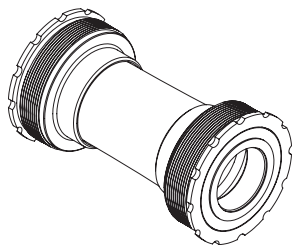




T47 Road TO SHIMANO THREADED BB System

TRiPEAK Product NO.
 EMA-T478624-SH★BR

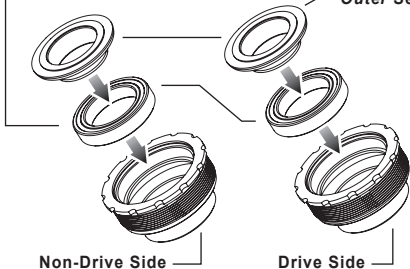


Bearing Options

- ★ SB (Steel Bearing) / ★ CB (Ceramic Bearing)
- Bearing Size : 25 X 37 X 7mm (6805-2RS)

Replacement Bearing set
 TRIPEAK item NO. SB : EMA-HP6805-2RS / CB : EMA-JC6805-2RS

Outer Seal Cover

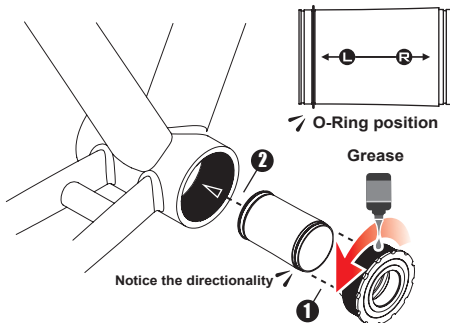


Non-Drive Side

Drive Side

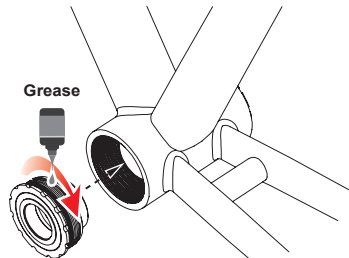
Step 1 THREADED (TWIST-LOCK)

DRIVE SIDE Cup set lock to 30Nm



Step 2 THREADED (TWIST-LOCK)

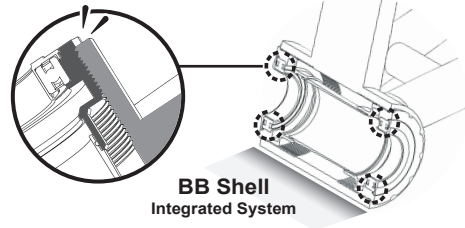
Non-DRIVE SIDE Cup set lock to 30Nm



TRIPEAK P/N : EMA-TT-B003
 Tool Required P/N : EMA-TT-B012/EMA-TT-B012S
 Tool compatible with torque wrench
 for installation use.

⚠ NOTICE

- To install TRIPEAK Bottom Bracket, we strongly recommend that you have a trained bicycle mechanic at your local bike shop.
- Do not alter this product in any way as it can cause unseen damage. Any modifications to this product will void the warranty.
- Make sure with the crankset are firmly attached to the bottom bracket. Improperly attached cranks can become detached from the BB set.
- When cleaning the bottom bracket set, only use mild soap and water. Never spray with high-pressure water. It will cause BB cup internal water ingress and influencing the bearing rolling lifetime.
- If you have any questions or concerns about this product Please feel free to contact us. E-mail: info@tripeakbearing.com



BB Shell
 Integrated System

Installed-Width

